

Evolution of Generative AI

in the future and its impact on society

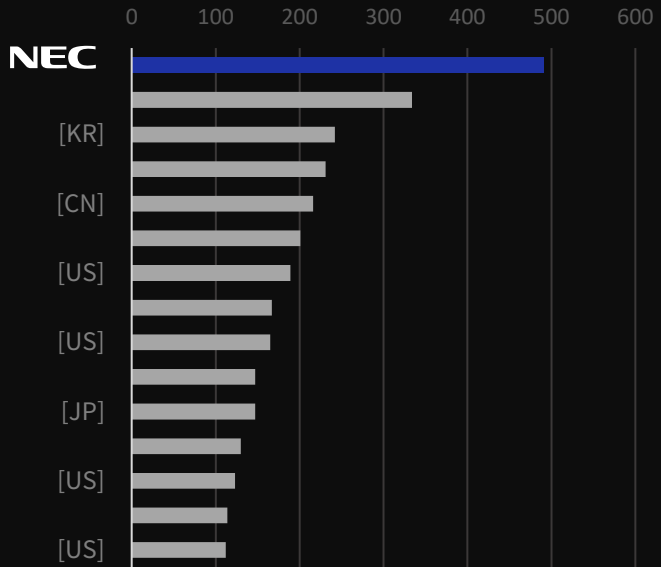
Motoo Nishihara

Corporate Executive Vice President and CTO
President of Global Innovation Business Unit

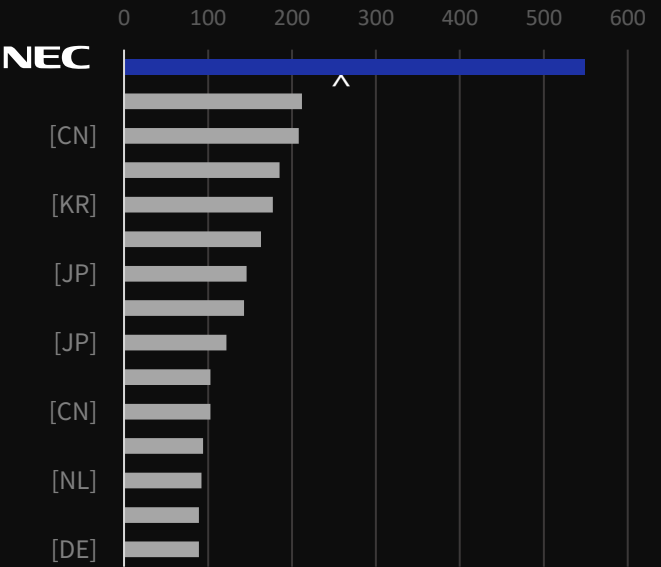
Global No.1

in the number of accumulative international patent applications for the three major areas of AI

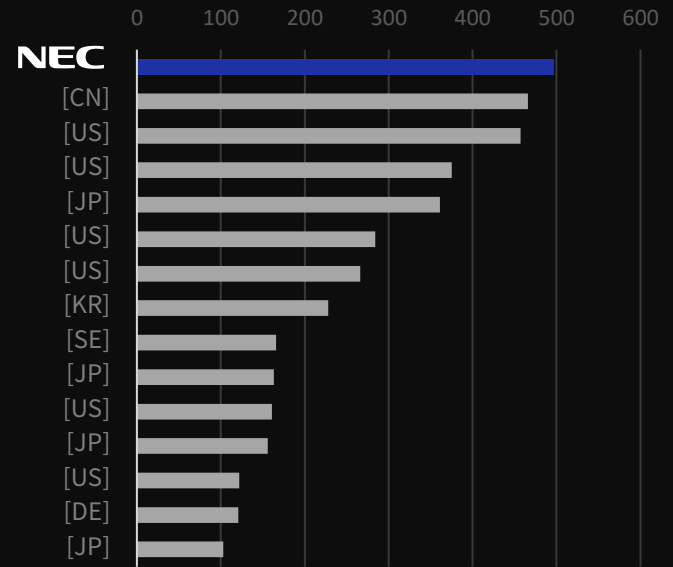
Biometric authentication



Video recognition



Analysis / Prescriptive AI



*November 2023 (Our research)

NEC cotomi High performance with reduced model size

Model Size **1 / 13**
(Parameter size)



Customer benefits



Resource efficient



Fast response



Easy to customize



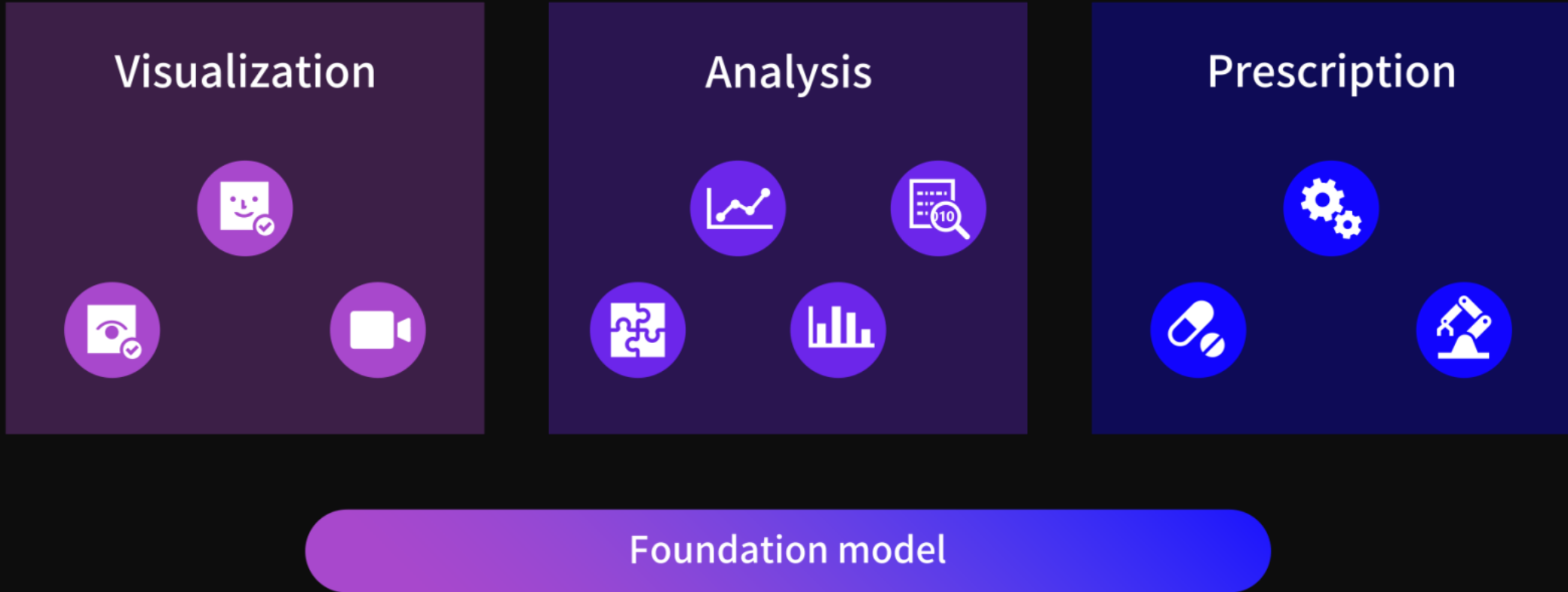
Workable on-premise



Future Networks and AI

AI Orchestration

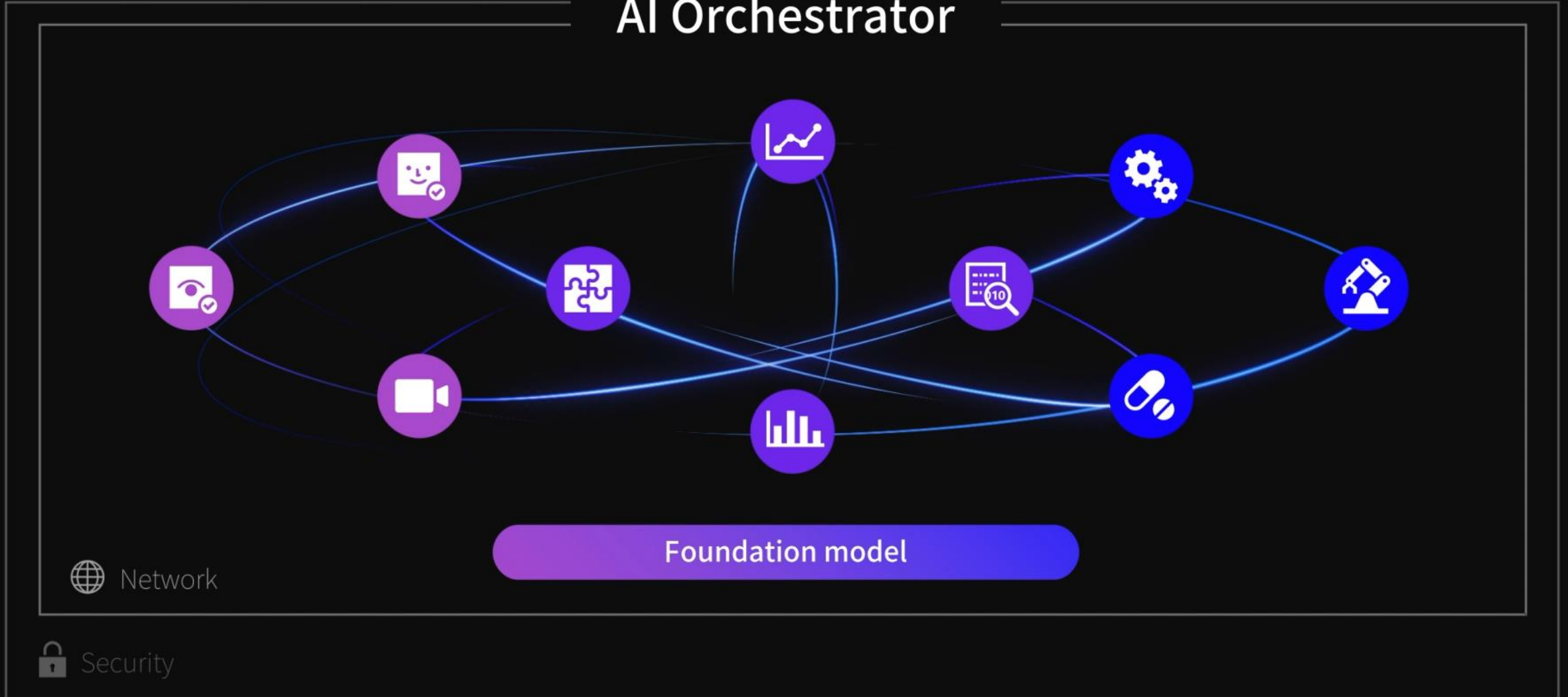
Automation of diverse real-world operations



AI Orchestration

Automation of diverse real-world operations

AI Orchestrator



Multimodal AI

Video Recognition AI & Large Language Model

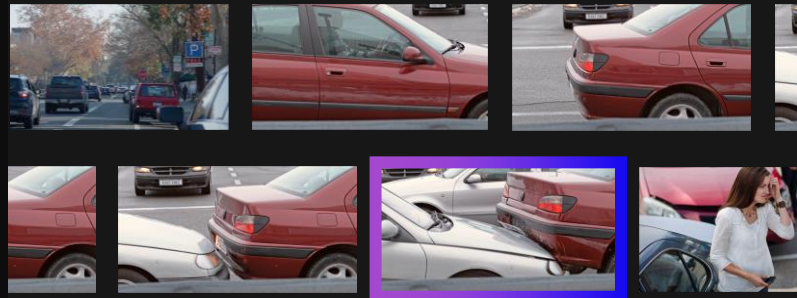
AI interprets the physical world and responds in understandable language

Instructions for AI

Tell me about the accident



AI understands
what's in the videos



Video recognition with AIs

AI responds in
meaningful language



The situation at the
moment of the accident

At 6:08 a.m. on April 22, 2023.
A silver car collided into the red car from behind.

LLM

Multimodal AI

Video Recognition AI & Large Language Model

AI interprets the physical world and responds in understandable language



An aerial night view of a city skyline, featuring numerous skyscrapers and illuminated streets. Overlaid on the city is a network of glowing white lines that form a complex web of arcs and connections, suggesting a global or interconnected network. The overall color palette is dominated by dark blues and greys, with bright white and yellow highlights from the city lights and network lines.

LLM everywhere

A man with a beard and mustache, wearing a dark green shirt, is looking down at his smartphone. The background is a blurred city street at night with warm bokeh lights. The text "LLM in your device" is overlaid in the center in a white, sans-serif font.

LLM in your device

A woman with long brown hair, wearing a light-colored ribbed sweater and large hoop earrings, is shown in profile, looking down at a smartphone she is holding in her hands. The scene is dimly lit, with a strong light source from a window in the background creating a soft glow and lens flare effects. The overall mood is focused and intimate.

Personalized AI